



STEP MELANGE™

by Gabriel



61104



60004



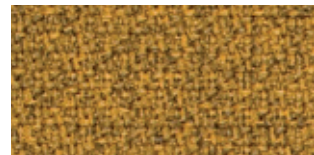
61149



60011



60090



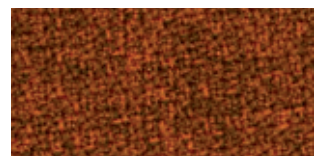
62057



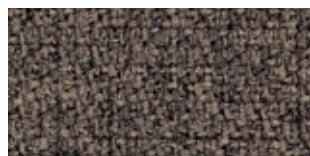
60021



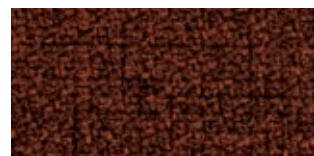
61152



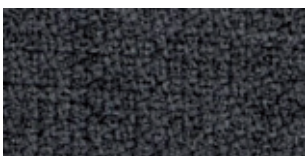
63082



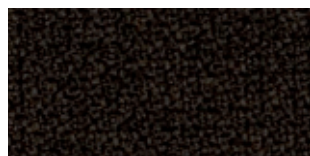
61103



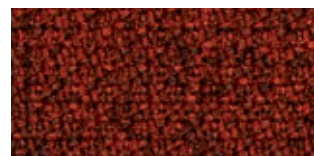
61151



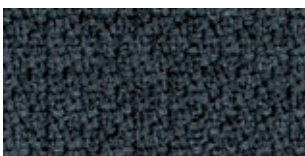
60092



61150



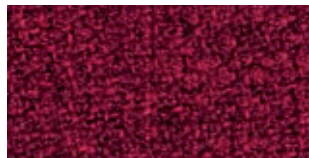
63075



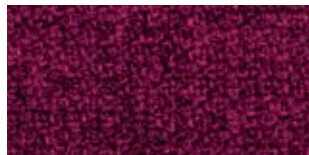
66019



61102



64177



64182



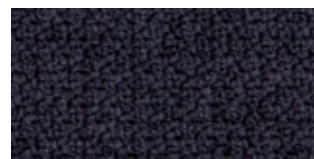
65093



64178



64181



65094



64179



65092



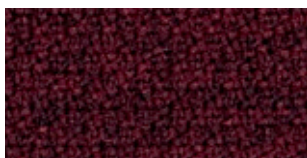
64013



65023



65090



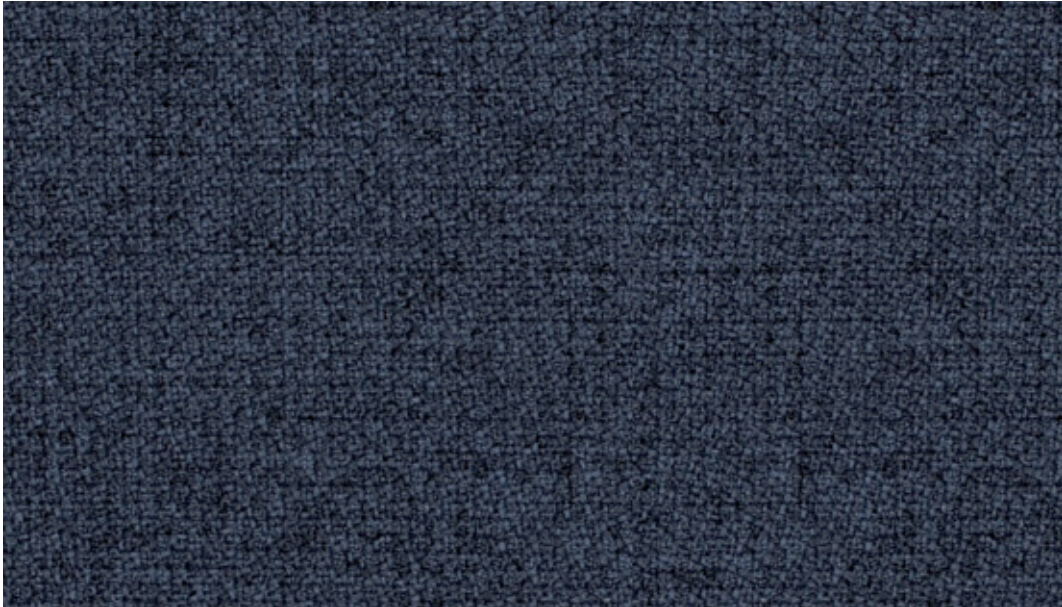
64159



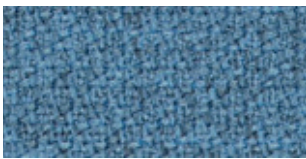
65047



65091



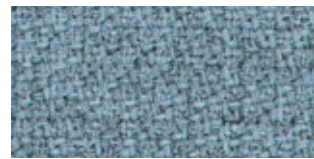
66152



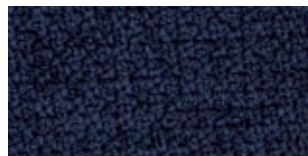
66018



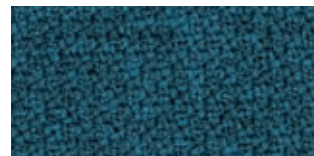
66152



67004



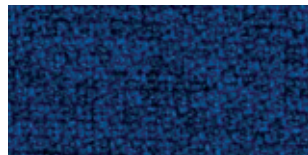
66148



67072



66150



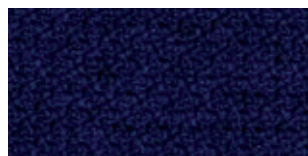
66151



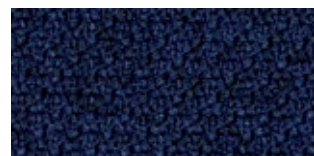
67007



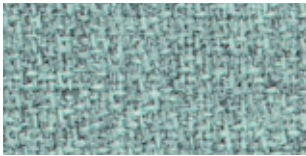
66149



65018



65011



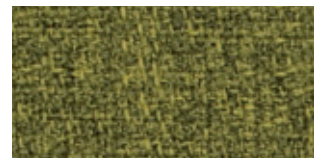
68118



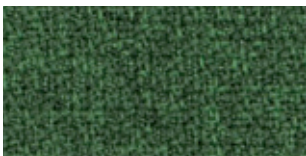
68157



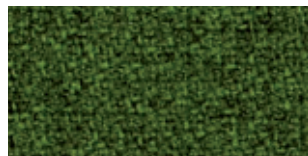
68163



62073



68159



68162



68119



68160



68120



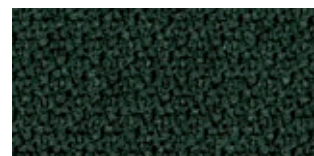
68165



68158



68161



68121

Please be aware that the PDF colour shades can appear different from the real fabric colours.

STEP MELANGE™

Design no.	2441 · 2442	
Fields of application	contract	
Material	Trevira CS	100%
Weight	470 g/lm · (15.16 oz/lin.yd.)	
Width	140 cm · (55")	
Abrasion resistance	rubs · EN ISO 12947-2 (Martindale)	100,000
Pilling	EN ISO 12945-2	4-5
Colour fastness to light	scale 1-8, max 8 · EN ISO 105 - B02	5-7
Colour fastness to rubbing	scale 1-5, max 5 · EN ISO 105x12 (wet/dry)	4-5
Maintenance	skrinkage: max. 5%	P(W)
Flammability:	EN 1021 1&2 · BS 5852 0&1 · BS 5852 Crib 5 · DIN 4102-B1 · CAL 117-E · FAR/JAR 25.853 (a) (i) (iii) · Önorm B3825 B1-Q1 · NFP92-503-M1 · CA TB 117-2013 · BS 7176 Medium hazard · AM 18 - NF D 60-013 · IMO MSC 307 (88) Annex 1 part 8/MED Certificate IMO · UNI 9175 Class 1 EMME. Will also pass other flammability standards. Flame retardant performance is dependent upon the foam used.	
US ACT	<ul style="list-style-type: none"> ☀ AATCC 16 Light fastness ☪ AATCC 8 or 116 wet/dry crocking 🔥 California Bulletin CAL 117-E Class 1 🔥 CA TB 117-2013 ⚠ ASTM D4157-02 Wyz Abrasion (Heavy Duty Upholstery) ★ ASTM D3511 Pilling 	<ul style="list-style-type: none"> pass pass pass pass pass pass
Design/Colours	Inger Mosholt Nielsen / Dorthe Helm	
Subject to changes and colour differences		

